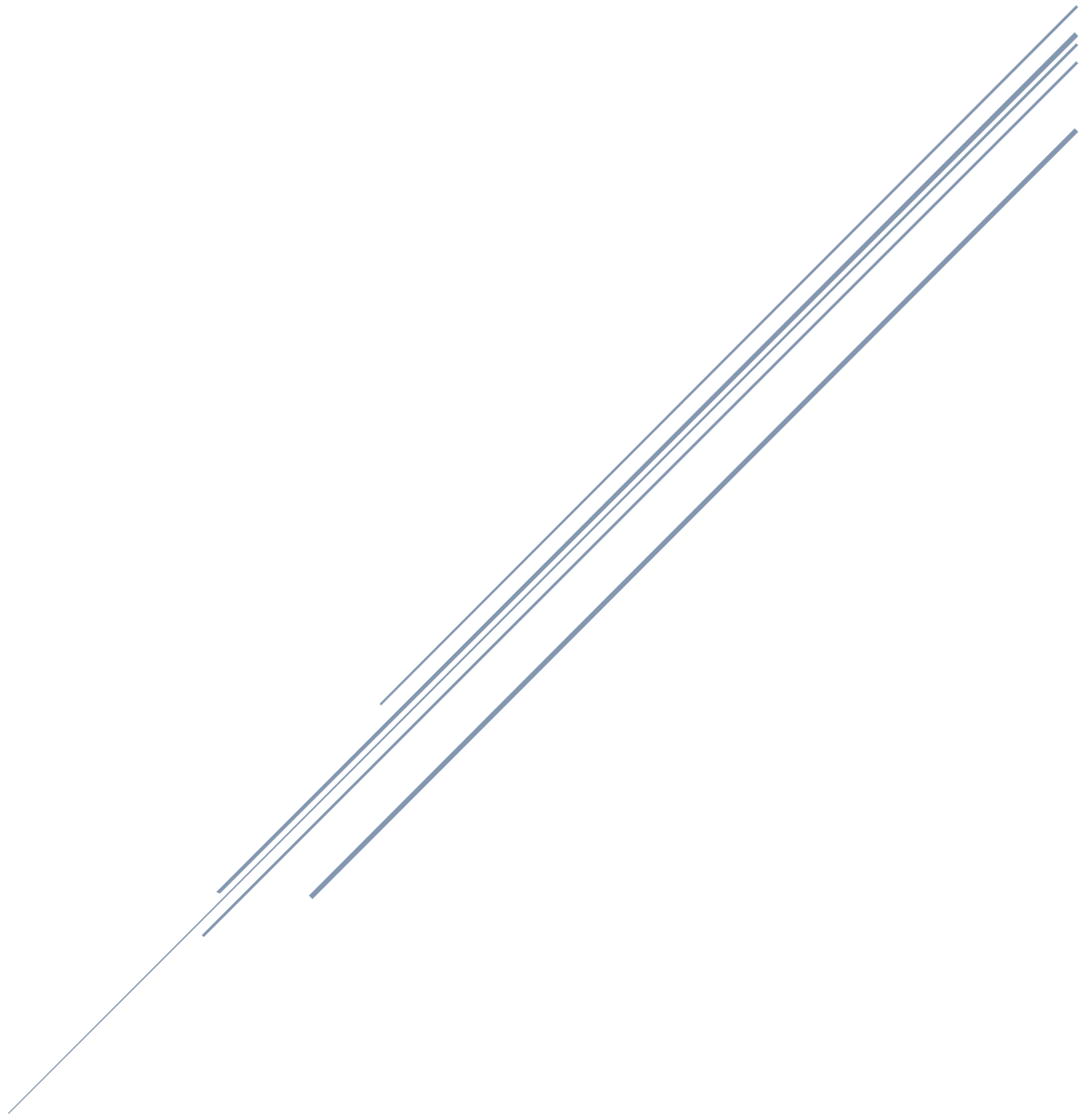


# LEGO CUTE CUBE

& ROTARY TINY PEDESTAL



# LEGO “Cute Cube™” Building Instructions

You need the following material, totaling 116 **original LEGO® pieces**, to build the Cute Cube™:

- 32 **bricks** 1x1 with 4 knobs (#4733)



- 24 **plates** 1x1 (#3024)



- 4 short **bars** 3L (#87994)



- 4 long **bars** 4L (#30374)



- 4 specialty **pins** (#61184))



- 12 flat **tiles** 1x3 (#63864)



- 24 flat **tiles** 1x4 (#2431)

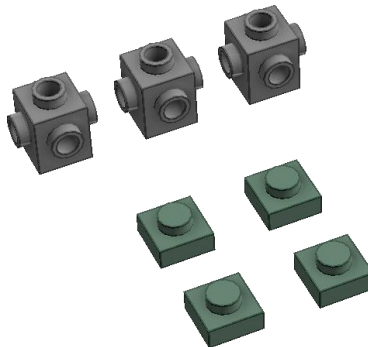


- 12 flat **tiles** 1x6 (#6636)



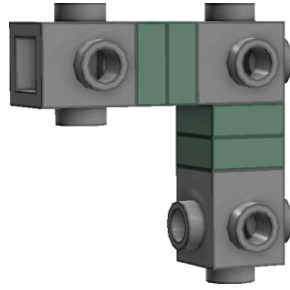
Note that the Lego pieces in these instructions use many colors to make it easy to visualize the steps. Some of these colors may not exist; some may be rare, so you must choose the colors for your cube based on availability of and the price you are willing to pay for the pieces. For the bricks and plates, you should use black to avoid distraction since they can be seen, even if barely, after the cube is finished.

## STEP 1



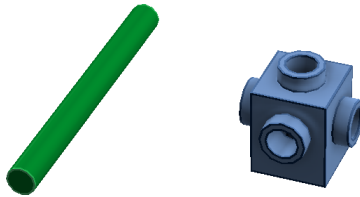
Material: three bricks, four plates.

Build the following corner:

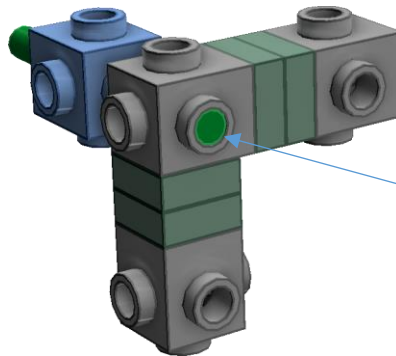
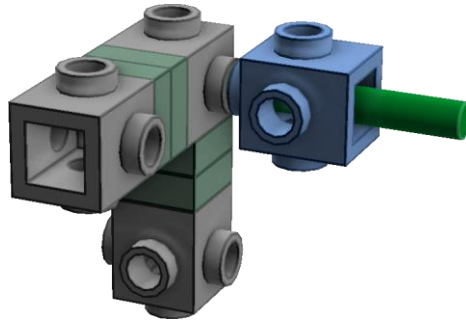


## STEP 2

Material: one long bar, one brick.



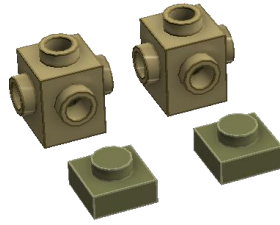
Connect the long bar and the brick to the corner from step 1 to make a vertex



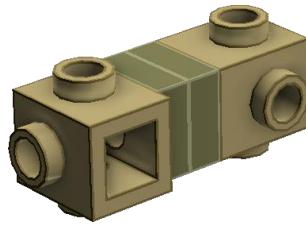
Make sure the end of the long bar stays aligned with the top of the stud (flushed)

## STEP 3

Material: two bricks, two plates.

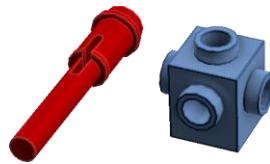


Build the following part:

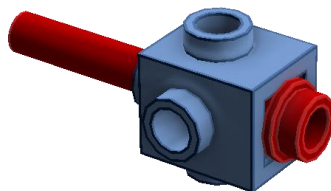


## STEP 4

Material: one brick, one pin.



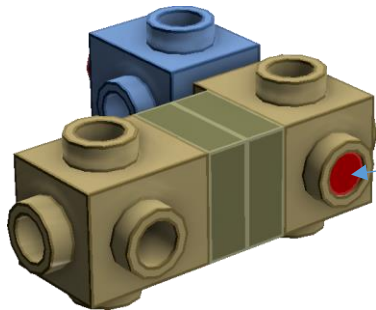
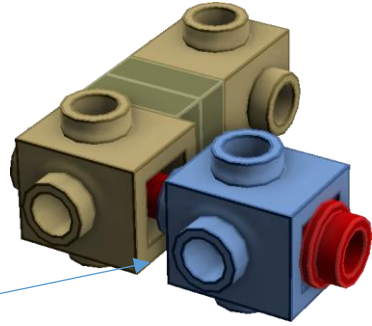
Build the following part by inserting the pin all the way into the brick.



## STEP 5

Connect the part assembled in step 4 to the part assembled in step 3 to make a corner

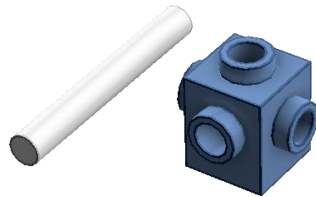
Do not connect these two bricks to each other



Make sure that the end of the pin stays aligned with the top of the stud (flushed)

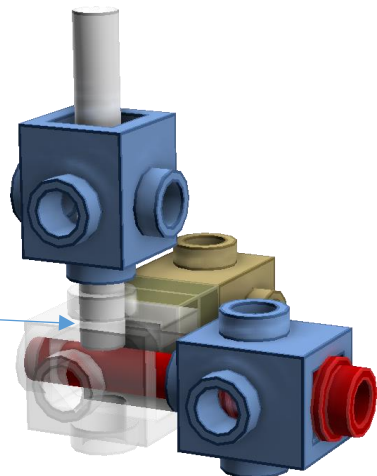
## STEP 6

Material: one short bar, one brick.



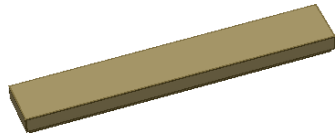
Connect the bar and the brick to the corner assembled in step 5 to make another vertex.

Push the short bar all the way into the corner brick (shown transparent for better visualization) until you feel it has hit the pin



## STEP 7

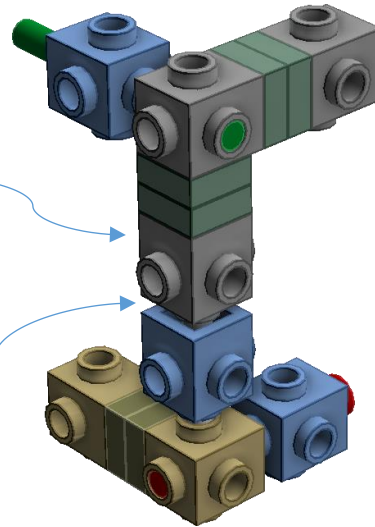
Material: one tile 1x6.



Connect the vertex built in step 2 to the vertex built in step 6 by inserting the first vertex into the short bar of the second vertex; this will make an edge assembly.

Tile will go on this side

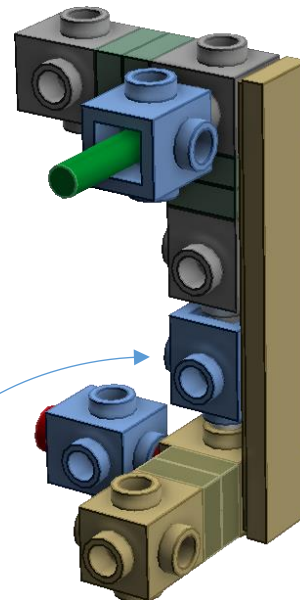
Do not connect these two bricks to each other



Connect the tile to the edge assembly to lock its correct length.

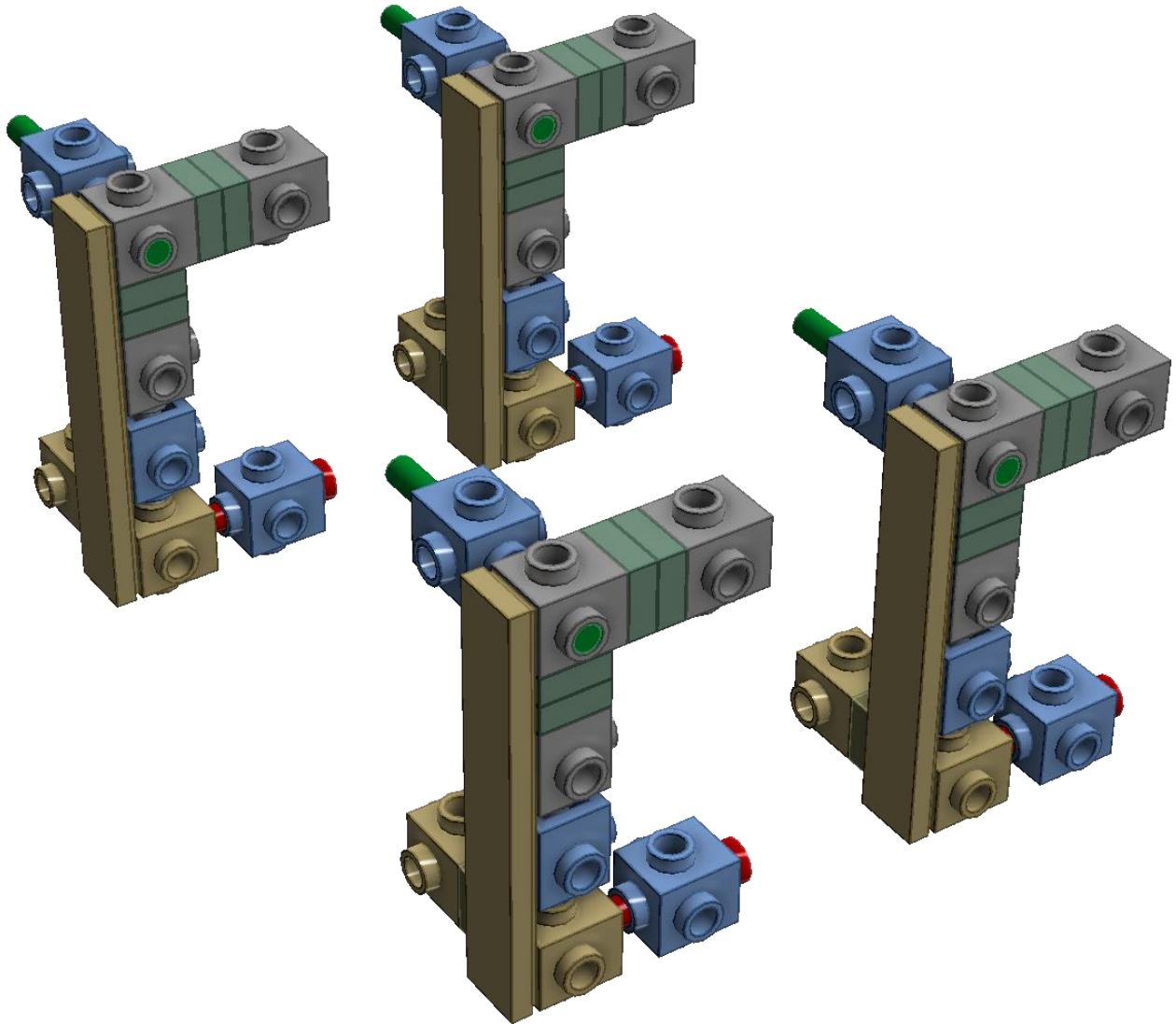


You may need to adjust the position of this brick along the short bar so that the tile can fit accordingly.



## STEP 8

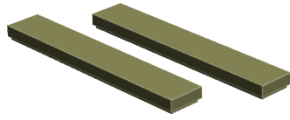
Repeat steps 1 to 7 three times.



You now have the four edge assemblies that make the inner structure of the Cute Cube™.

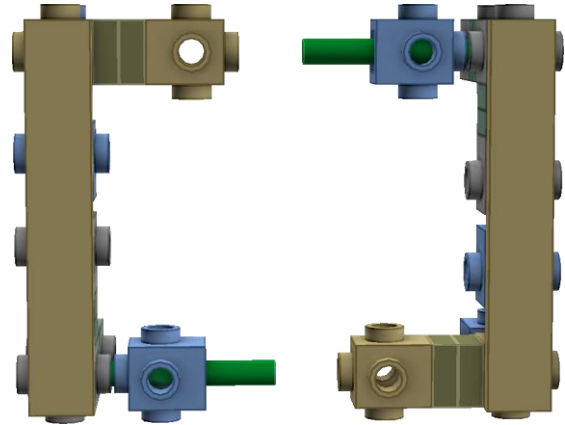
## STEP 9

Material: two tiles 1x6.

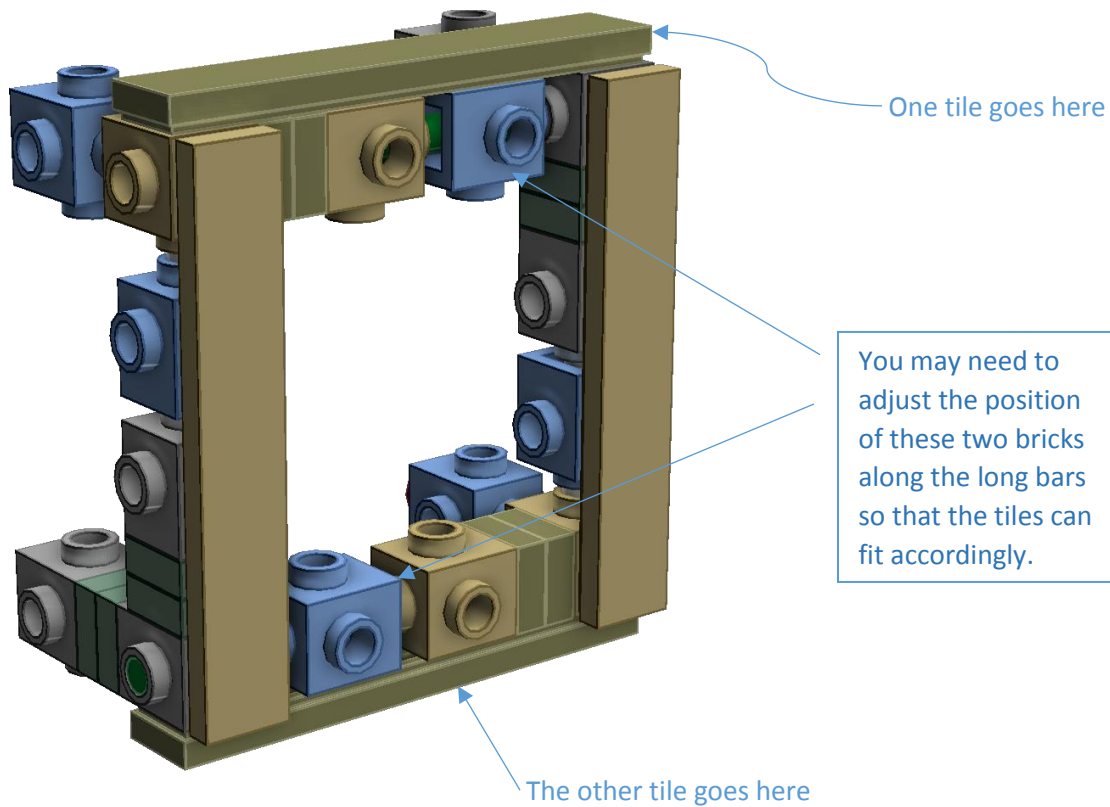


We are going to connect TWO of the edge assemblies from step 8 to each other to make one face of the inner structure of the Cute Cube™.

Align the two edge assemblies.



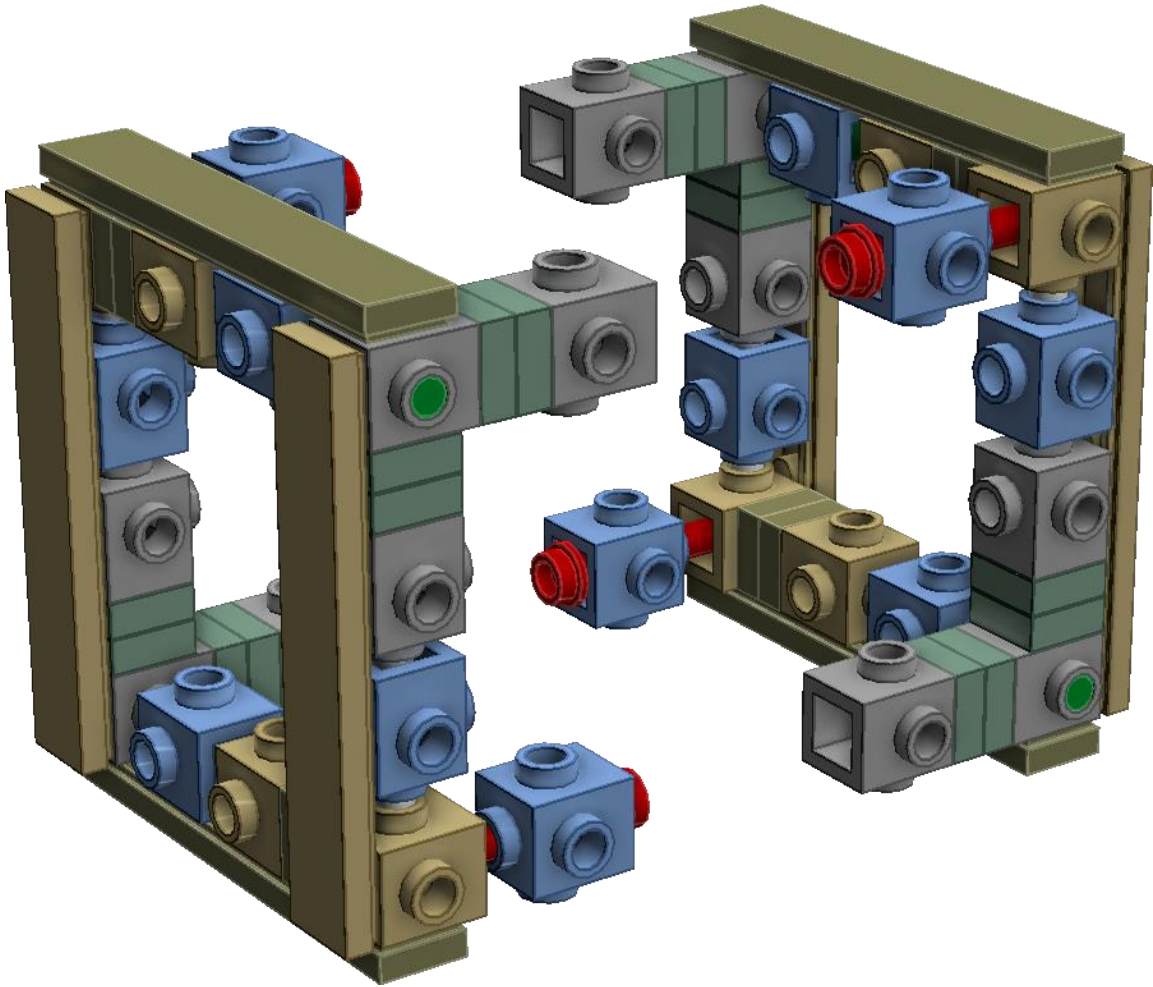
Connect the two edge assemblies through their long bars only so that you can also connect the tiles to the newly created edges and lock their correct lengths.





## STEP 10

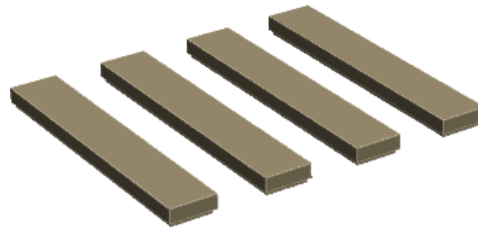
Repeat step 9 with the other two remaining edge assemblies from step 8.



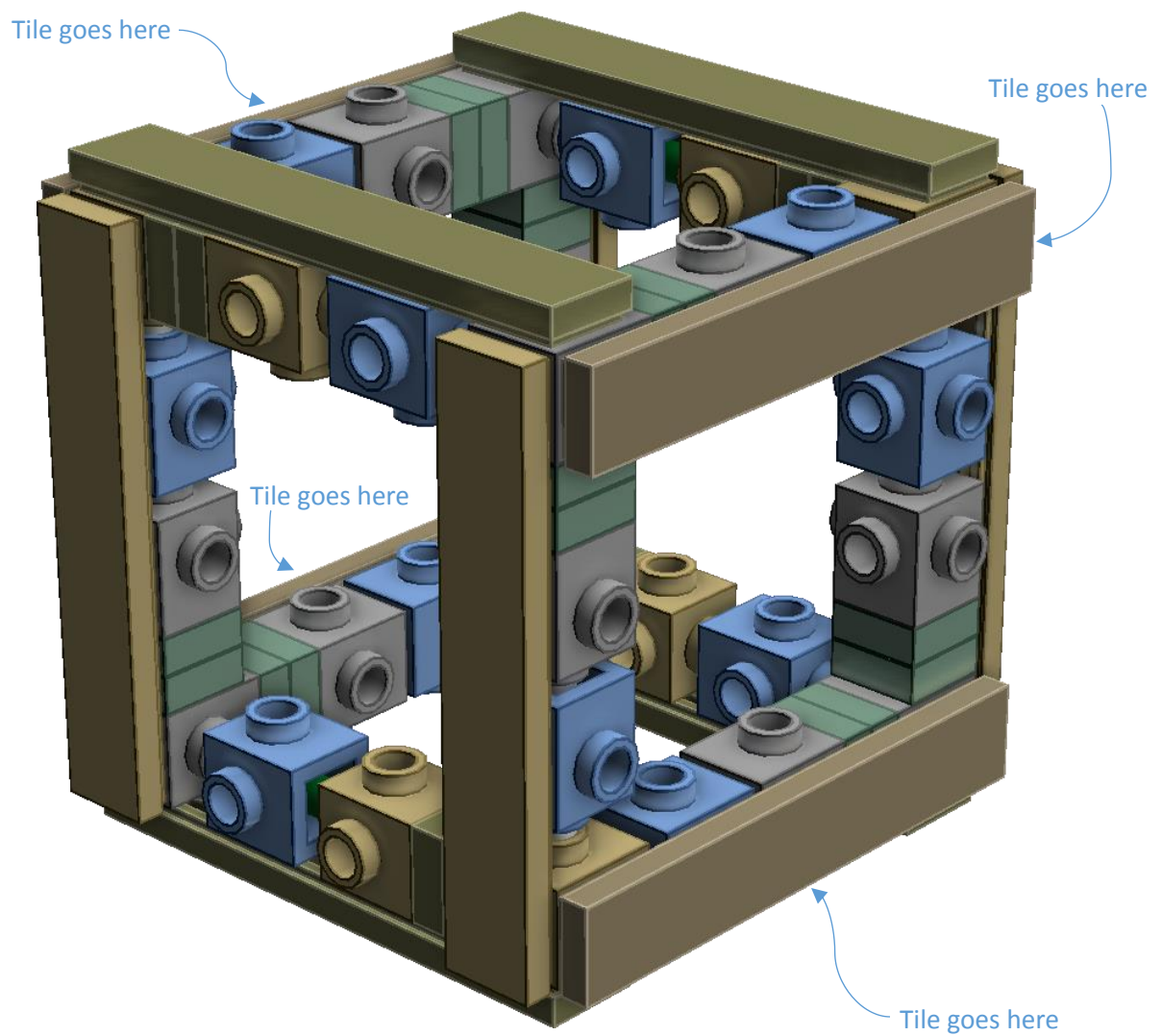
You now have the two faces (two halves) that make the inner structure of the Cute Cube™.

## STEP 11

Material: four tiles 1x6.



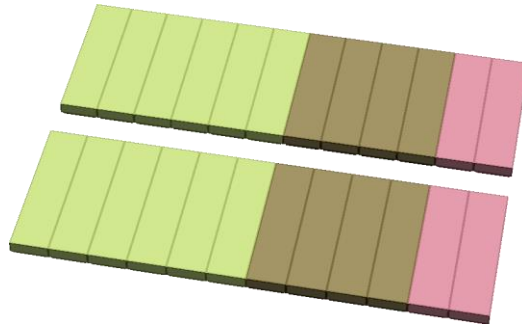
Align the two faces from step 10 as depicted in the previous picture. Connect the two faces through their pins. Connect the four tiles to the newly created edges to lock their correct lengths. Upon connecting the faces, the four remaining faces of the cube are created.



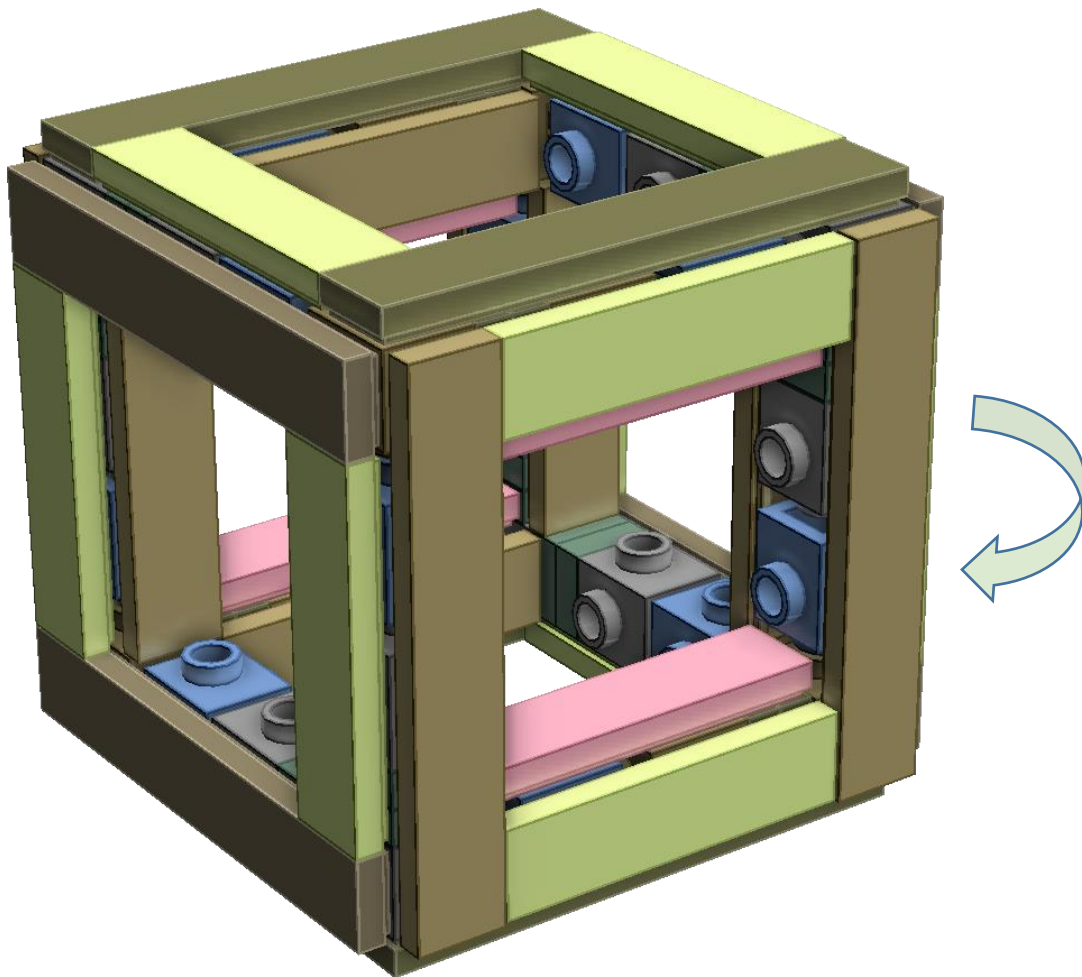
You have completed the inner structure of the Cute Cube™, its “skeleton”.

## STEP 12

Material: twenty-four tiles 1x4.

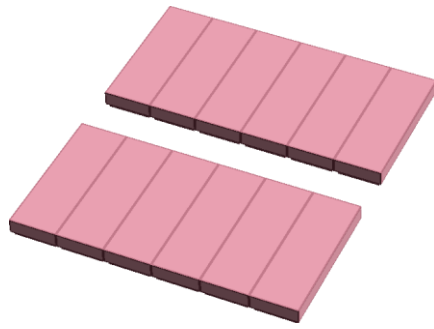


Finish the outside surfaces of the cube skeleton by connecting two tiles to each face of the cube; the remaining 12 tiles are connected in pairs, one facing each other, in the inside surfaces of the Cute Cube™ skeleton.

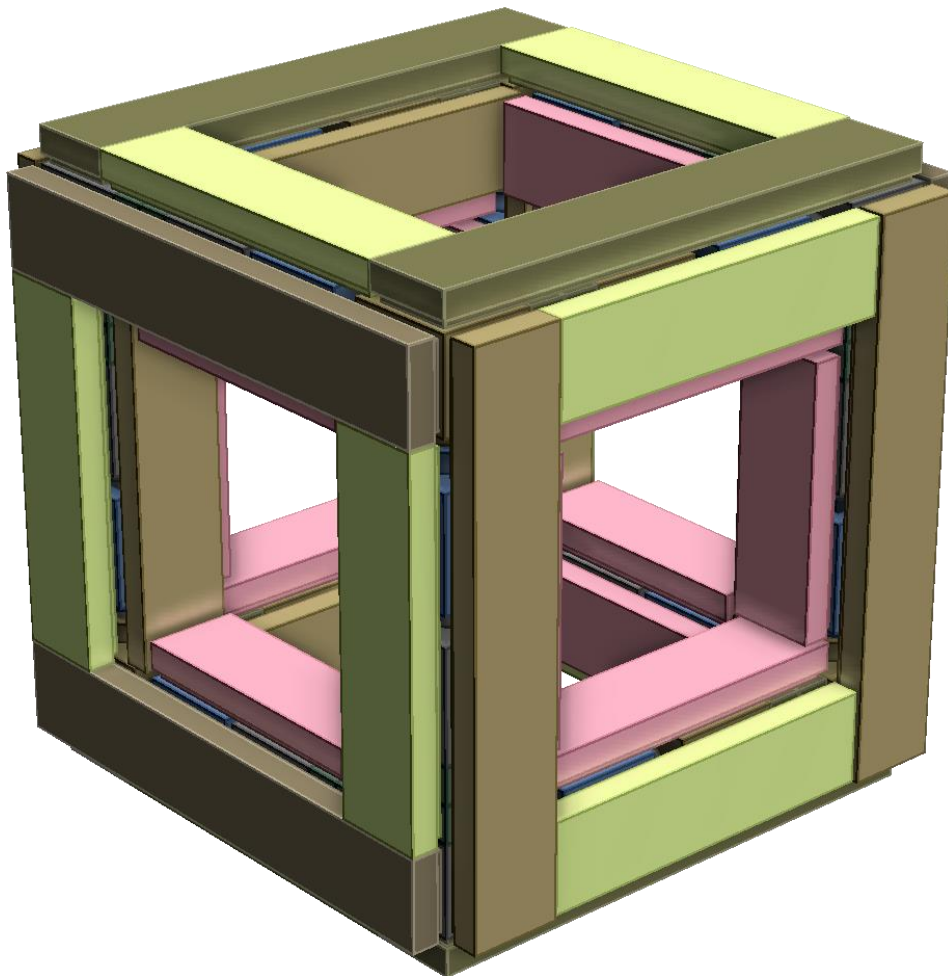


## STEP 13

Material: twelve tiles 1x3.




Finish the inside surfaces of the Cute Cube™ skeleton by connecting the tiles to them.



After the cube is finished, you can rearrange the location of the tiles as you wish. You can create a great variety of unique cubes by using different combinations of colors and positions for the tiles.

## LEGO “Cute Cube™” Average Piece Prices

Name	Picture	Design ID	Needed	Color	AVG \$	Total \$
FLAT TILE 1X4		2431	24	Lime	7	1.68
PLATE 1X1		3024	24	Black	9	2.16
BRICK 1X1 WITH 4 KNOBS STUDS ON FOUR SIDES		4733	32	Black	15	4.80
FLAT TILE 1X6		6636	12	Dark Blue	16	1.92
BAR 4L - LIGHT SWORD - BLADE		30374	4	White	18	0.72
TECHNIC PIN ½ WITH 2L EXTENSION – SHAFT Ø3.2 FLICK MISSILE		61184	4	Light Grey	4	0.16
FLAT TILE 1X3		63864	12	Red	13	1.56
BAR 3L - SHAFT 3M Ø3.2 BAR ARROW		87994	4	Red- dish Brown	22	0.88
			<b>116</b>			<b>13.88</b>

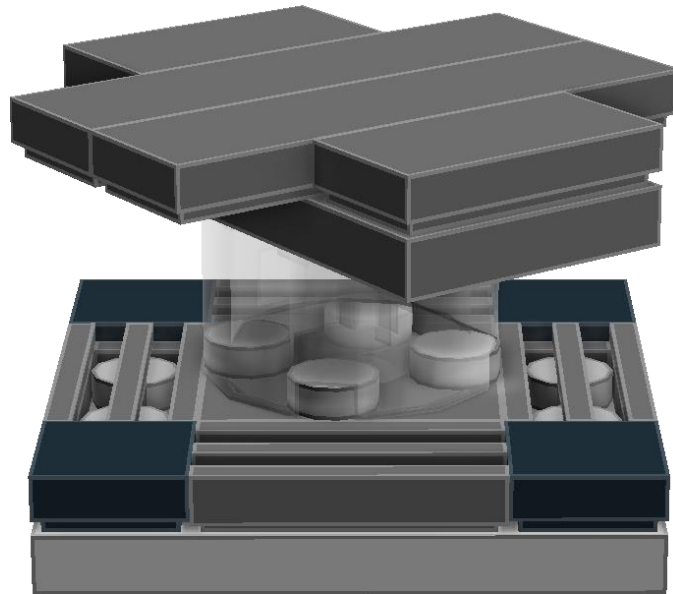
Average prices from Bricklink Price Guide as of July 2016 for an “RGB color themed” Cute Cube™. Shipping, handling and other fees usually charged by Bricklink vendors, as well as the likely use of multiple vendors, are not considered and will increase substantially the overall price of a cube. Some pieces are also available at the official Lego Pick-A-Brick site but prices are usually higher.

# LEGO Cute Cube™ Rotary Tiny Pedestal™

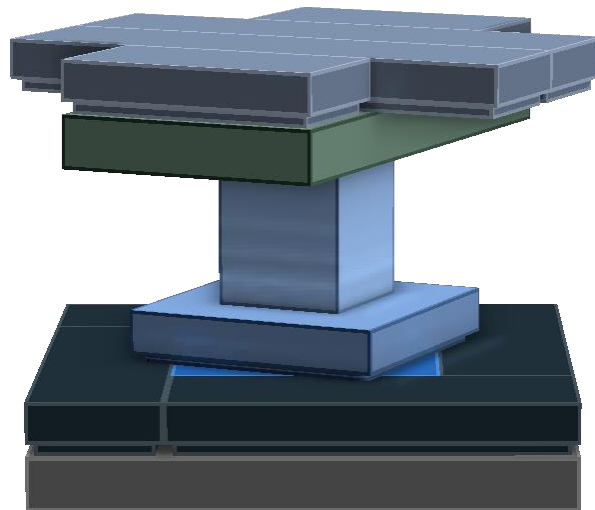
## Parts Needed

Name	Picture	Design ID	Needed	Color	AVG \$	Total \$
PLATE 4X4		3031	1	Black	12	0.12
RADIATOR GRILLE 1X2		2412(b)	4	Black	4	0.16
FLAT TILE 1X1		3070(b)	4	Black	9	0.36
TURN PLATE 2X2, LOWER PART		3680	1	Black	5	0.05
TURN PLATE 2X2, UPPER PART		3679	1	Light Bley	4	0.04
BRICK ROUND 2X2		6143 3941	1	Trans-Clear	22	0.22
PLATE 2X4		3020	1	Dark Bley	7	0.07
FLAT TILE 1X2		3069(b)	2	Light Bley	13	0.26
FLAT TILE 1X4		2431	2	Light Bley	17	0.34
			<b>17</b>			<b>1.62</b>

### Building Instruction



### Alternate Rotary Tiny Pedestal™



Alternatively, you can use a jumper 2x2 (#87580) and a brick 1x1 (#3005) instead of the brick round 2x2 to make a more delicate looking rotary base for the cubes.

Screenshot from BrickStore application for the material needed:

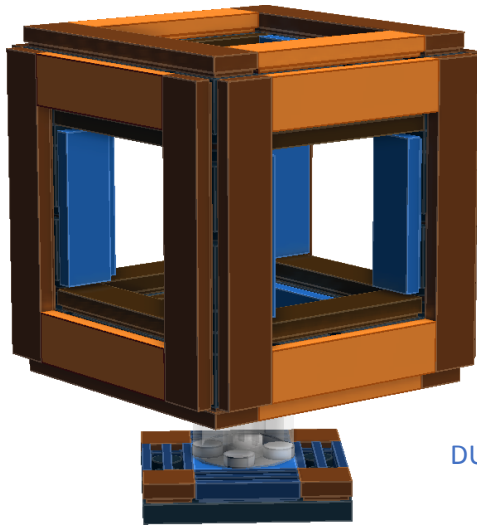
Part #	Description	Cond.	Color	Qty.	Price	Total	Category	Weight
2431	Tile 1 x 4	N	Lime	24	\$ 0.071	\$ 1.704	Tile	13,920 g
3024	Plate 1 x 1	N	Black	24	\$ 0.085	\$ 2.040	Plate	4,800 g
4733	Brick, Modified 1 x 1 with Studs on 4 Sides	N	Black	32	\$ 0.150	\$ 4.800	Brick, Modified	14,400 g
6636	Tile 1 x 6	N	Dark Blue	12	\$ 0.162	\$ 1.944	Tile	9,960 g
30374	Bar 4L (Lightsaber Blade / Wand)	N	White	4	\$ 0.175	\$ 0.700	Bar	1,200 g
61184	Technic, Pin 1/2 with 2L Bar Extension (Flick Missile)	N	Light Bluish Gray	4	\$ 0.041	\$ 0.164	Technic, Pin	1,200 g
63864	Tile 1 x 3	N	Red	12	\$ 0.134	\$ 1.608	Tile	4,680 g
87994	Bar 3L	N	Reddish Brown	4	\$ 0.223	\$ 0.892	Bar	0,800 g
3031	Plate 4 x 4	N	Black	1	\$ 0.122	\$ 0.122	Plate	2,220 g
2412b	Tile, Modified 1 x 2 Grille with Bottom Groove / Lip	N	Black	4	\$ 0.042	\$ 0.168	Tile, Modified	0,920 g
3070b	Tile 1 x 1 with Groove	N	Black	4	\$ 0.094	\$ 0.376	Tile	0,640 g
3680	Turntable 2 x 2 Plate, Base	N	Black	1	\$ 0.047	\$ 0.047	Turntable	0,470 g
3679	Turntable 2 x 2 Plate, Top	N	Light Bluish Gray	1	\$ 0.037	\$ 0.037	Turntable	0,300 g
3941	Brick, Round 2 x 2	N	Trans-Clear	1	\$ 0.219	\$ 0.219	Brick, Round	1,250 g
3020	Plate 2 x 4	N	Dark Bluish Gray	1	\$ 0.073	\$ 0.073	Plate	1,250 g
3069b	Tile 1 x 2 with Groove	N	Light Bluish Gray	2	\$ 0.128	\$ 0.256	Tile	0,520 g
2431	Tile 1 x 4	N	Light Bluish Gray	2	\$ 0.175	\$ 0.350	Tile	1,160 g

Items: 17 | Lots: 133 | Value: \$ 15,500 | Weight: 59,690 g



# LEGO Cute Cube™ Gallery

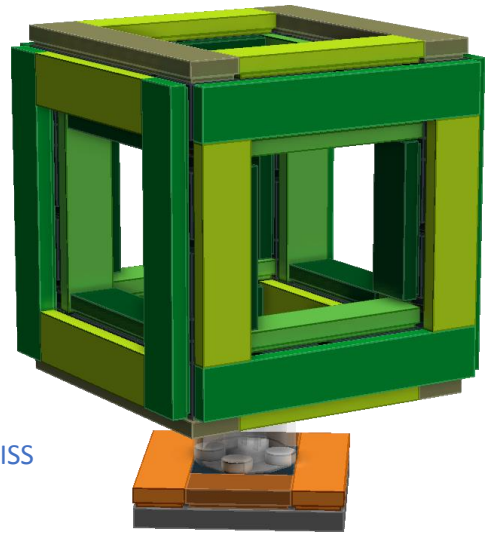
My cubes are chronologically numbered, given a name and color themed in pairs.



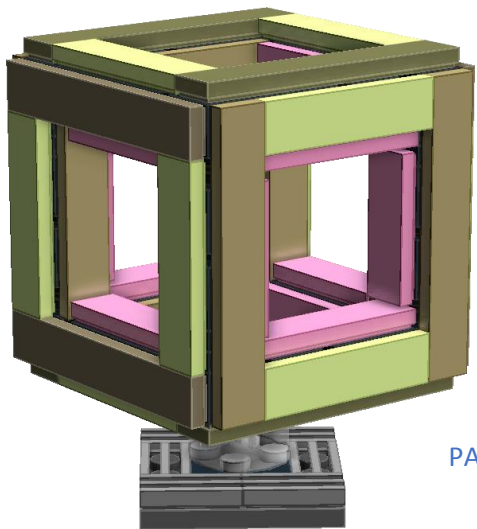
XIV

DUNE

III



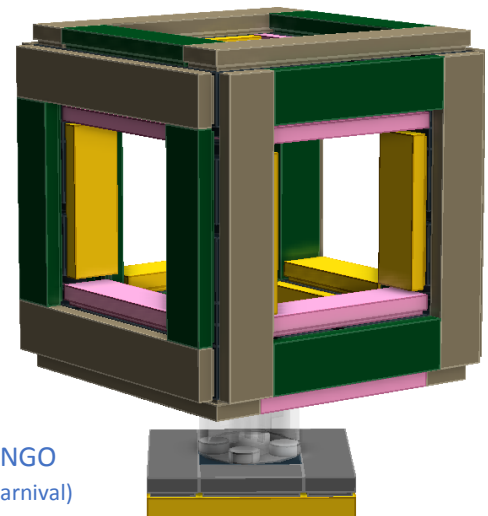
BLISS



XIII

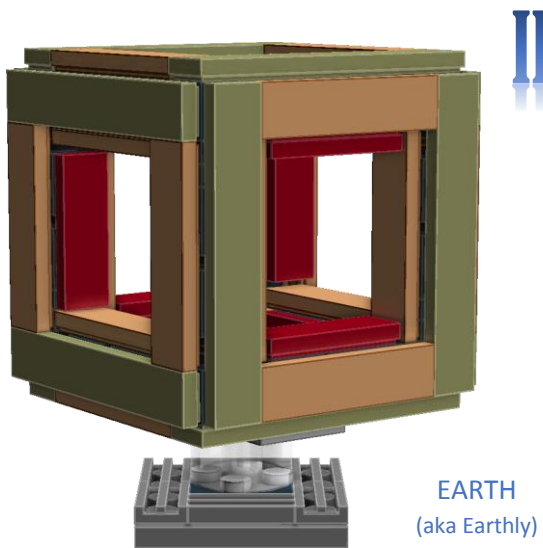
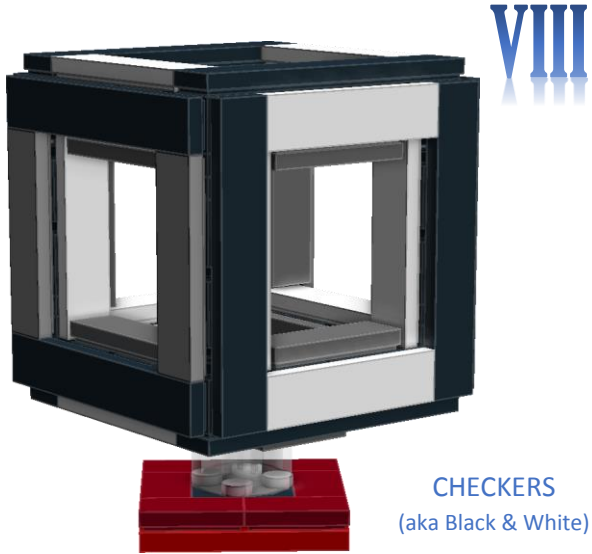
PASTEL

IX

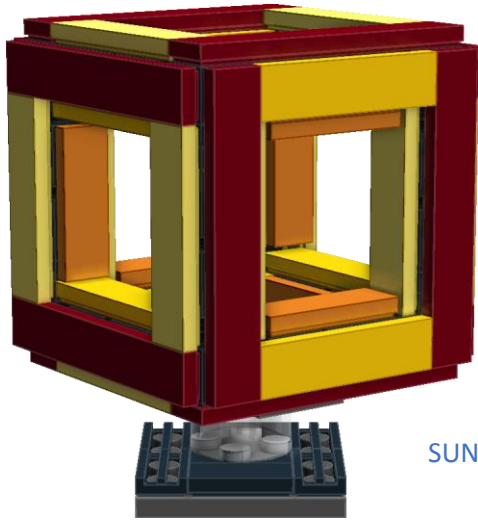


MANGO  
(aka Carnival)

# Cute Cube™ Gallery - continued



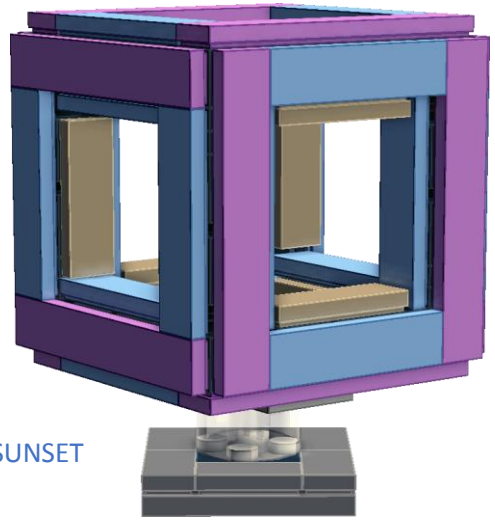
# Cute Cube™ Gallery - continued



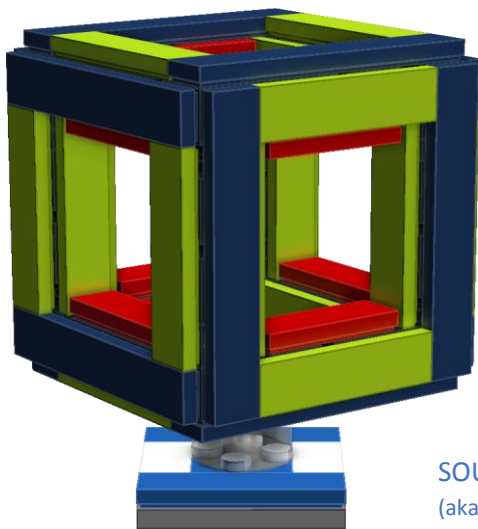
XII

SUNRISE

VII



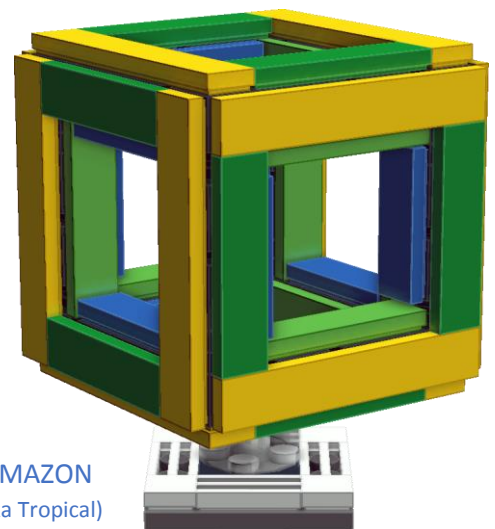
SUNSET



IV

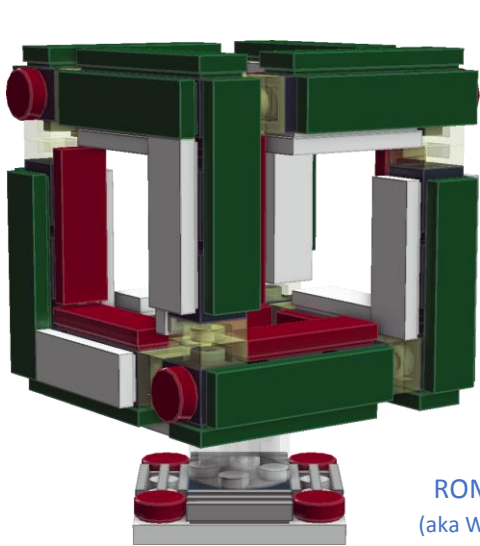
SOURCE  
(aka RGB)

VI



AMAZON  
(aka Tropical)

# Cute Cube™ Gallery - final



X

ROMAN  
(aka Weirdo)

XI



ARCTIC

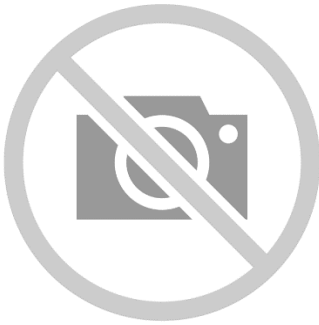


From →, ↓: Source, Amazon, Checkers, Shades, Sunset, Sunrise, Earth, Shore, Roman, Arctic, Mango, and Pastel Cute Cube™ & Rotary Tiny Pedestal™ designed by "Vee, the despotic quibbler".

© 2014-2016 OneOakWay.com, All Rights Reserved

Cute Cubes™ in the making...

XVII XVIII



ATLANTIS  
(aka Oceanic)



AZALEA  
(aka Rose/Blossom)



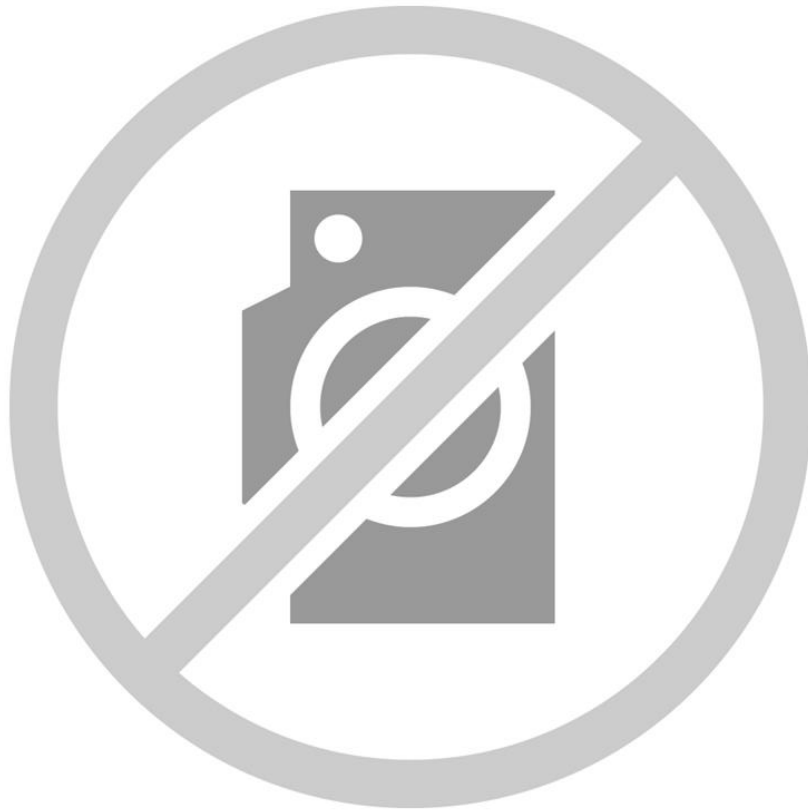
XV XVI



NIGHT OUT



NIGHT & DAY



This page intentionally left blank